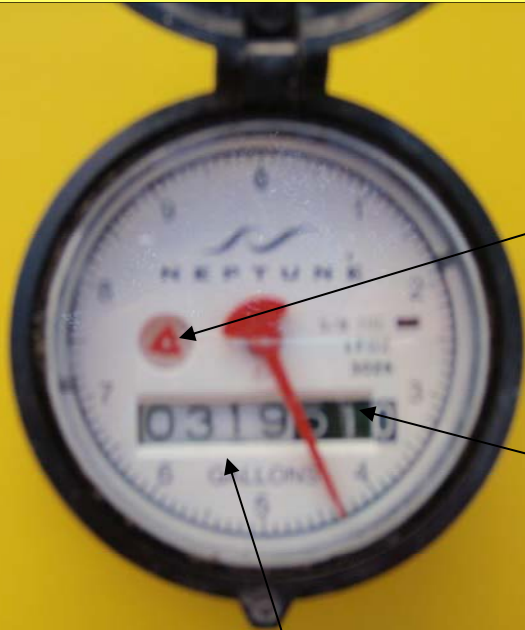


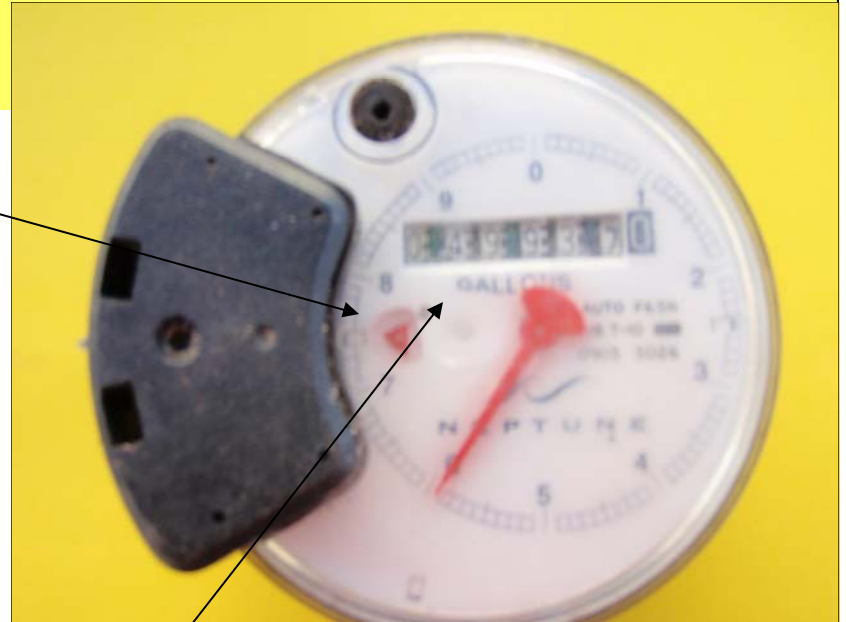
How to read a meter



Leak detector

This will turn when water goes through the meter.

The #'s on the right register 100's and are not used to bill



Read the first four places from left to right.

(This meter is reading 319– 0's to left are not included in the reading.)



This is one of the new auto read meter and it is reading 431

This meter is reading 499



This shows a flow rate of 0, on an auto read meter.